



Knee Arthroscopy Surgery

Recommended accessories:
 230000760 donut head gel pad x1
 230000769 Torso Section gel pad x1
 121000294 Arm rest x2
 121000532 Knee support



Rectal Surgery

Recommended accessories:
 121000294 Arm rest x2
 121000347 Foot plate 1pair
 121000348 Notched Clamp x2
 121000355 Iliac support x1



Orthopedic Procedures

Recommended accessories:
 230000760 donut head gel pad x1
 230000769 Torso Section gel pad x1
 121000358 Orthopedics traction x1
 121000349 High position arm holder x1
 121000294 Arm rest x1



Thoracic Kidney/ Gall Bladder Surgery

Recommended accessories:
 230000760 donut head gel pad x1
 230000769 Torso Section gel pad x1
 121000294 Arm rest x1
 121000349 High position arm holder x1
 230000766 Universal Dome Shaped Pad x1



Orthopedic Procedures

Recommended accessories:
 121000358 Orthopedics traction x1
 121000534 Knee crutch for orthopaedic traction x1
 121000535 Installing rack of inserted rod x1



Orthopedic Procedures

Recommended accessories:
 121000358 Orthopedics traction x1
 121000533 Anti-tensile bracket for side-lying position x1
 121000349 High position arm holder x1

CE

Aegistab OP830/330 Electronic Operating Table



CORPORATE HEADQUATER

HEYER Medical AG
 Carl-Heyer-Str. 1/3, 56130 Bad Ems, Germany
 www.heyermedical.de

HEYER Medical AG

Carl-Heyer-Str. 1/3, 56130 Bad Ems, Germany
 Tel: +49 2603 791 0
 Fax: +49 2603 791 200
 info@heyemed.com

HEYER Medical Co., Ltd.

No.10, Chaobai Street, Yanjiao Development Zone
 065201, Sanhe City, Hebei, China
 Tel: +86 10 5841 1198
 Fax: +86 10 6371 8989
 marketing@heyemed.com



A cost-effective, multi-performance operating table with a maximum load of 297kg, meeting the requirements of different surgeries.



② High Efficiency Built-in Battery

- Imported from Panasonic
- Maximum 15 days working time
- No request for AC power to increase surgery safety



③ Perfect X-ray Access

- Remarkable 300mm longitudinal shifting capability create perfect X-ray access



④ Ergonomic Adjustment

- Convenient design for wrench of leg plate and head plate, able to control leg and head plates with one hand
- Imported gas springs guarantee smooth movement
- Imported round-hole clamps enable easy lock and unlock accessories, ensuring safety during operation
- Adjustable table height (700-1100mm) and T-shape base provide comfortable working environment



① Premium Quality Material

- Table frame is specially coated
- Other exposed steel is stainless steel SUS304
- Easy to clean and disinfect
- Optional with SUS304 stainless steel table frame



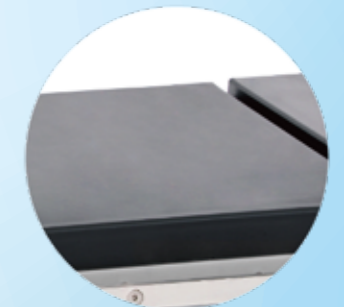
⑤ Surgical Configuration

- Flex and re-flex function
- Table angles and section lengths can be adjusted within a wide range with 6 standard and 13 optional accessories, meeting the need of various surgeries



⑥ Safety

- Control panel power off automatically when no operation over 1 minute, avoiding any misoperation



⑦ Pad

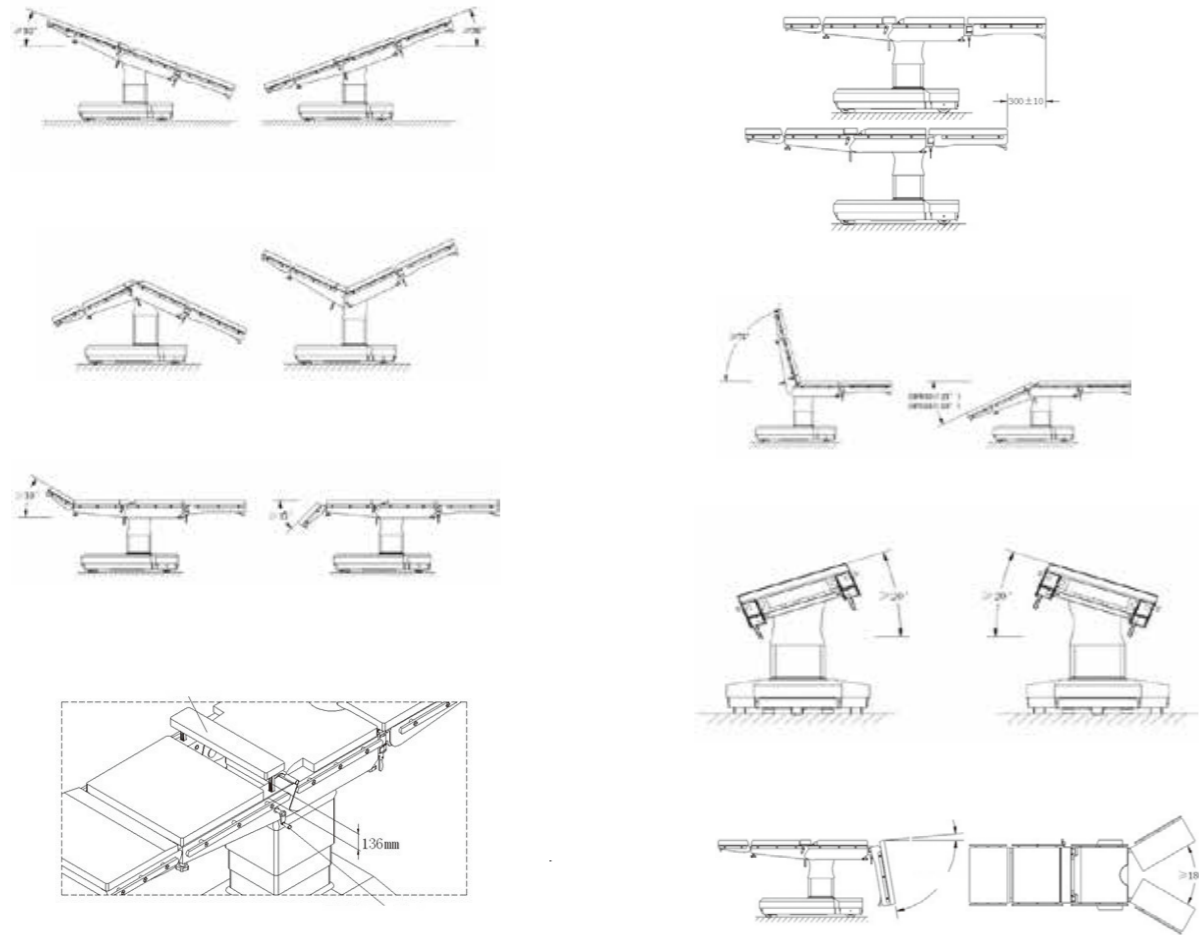
- PU foam mattress, easy to disinfect and sterilize
- Effectively reduce the possibility of patient bedsores



⑧ Built-in Elevator Kidney-bridge

- Has no negative effect on X-ray transparency and is able to support kidney and gall bladder surgeries efficiently

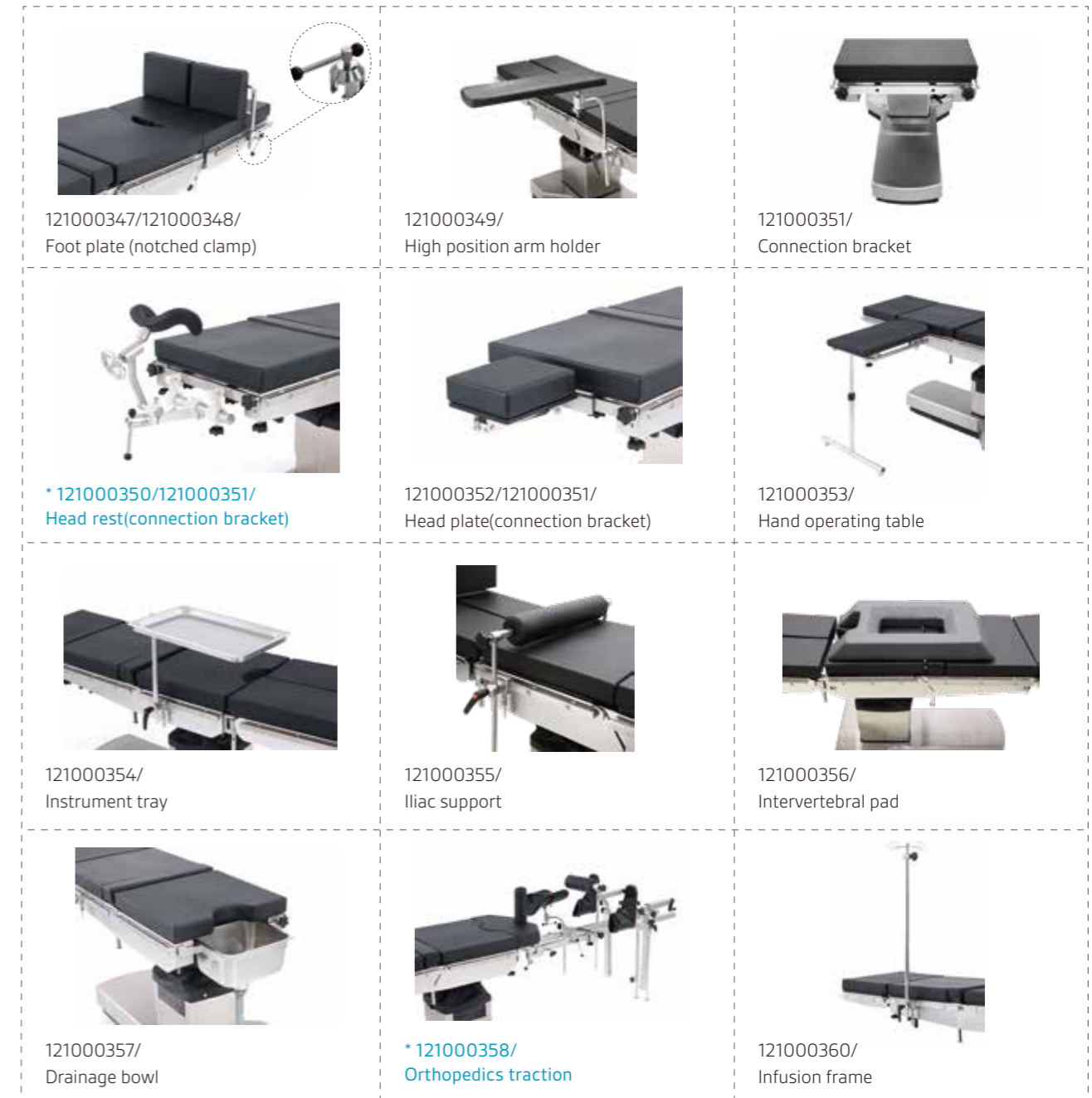
Wide adjustment range for all positions, satisfying the demand of different surgeries



Optional Accessories

Features:

All table accessories are made of SUS304 stainless steel. All the surfaces are easy to clean and disinfect. With 6 standard and 13 optional accessories, the surgical bed can support a multitude of body positions and procedures, meeting the requirements of most surgeries.



OP830/330 Technical Specifications

Table Length (mm)	2,040
Table Width (without side rails) (mm)	520
Table Height (without pads) (mm)	680 to 950
Trendelenburg/Reverse	30°/30°
Lateral Tilt (left/right)	20°/20°
Back Place Up/Down	75°/25°(OP830) 75°/30°(OP330)
Head Plate Up/Down (detachable)	30°/45°
Leg Plate Up/Down (detachable)	5°/90°
Leg Plate Split (detachable)	180°
Kidney-bridge Elevator Up (mm)	136
Longitudinal Shift (mm)	300(OP830)
Weight Capacity (kg)	260

Orthopedics Features

The orthopedics traction is designed based on EU's requirements, meeting the requirements of most orthopedics surgeries. All parts are made of SUS304 stainless steel with high strength. Therefore, the surgical table is very stable during surgeries and it is also X-ray and C-arm translucent.

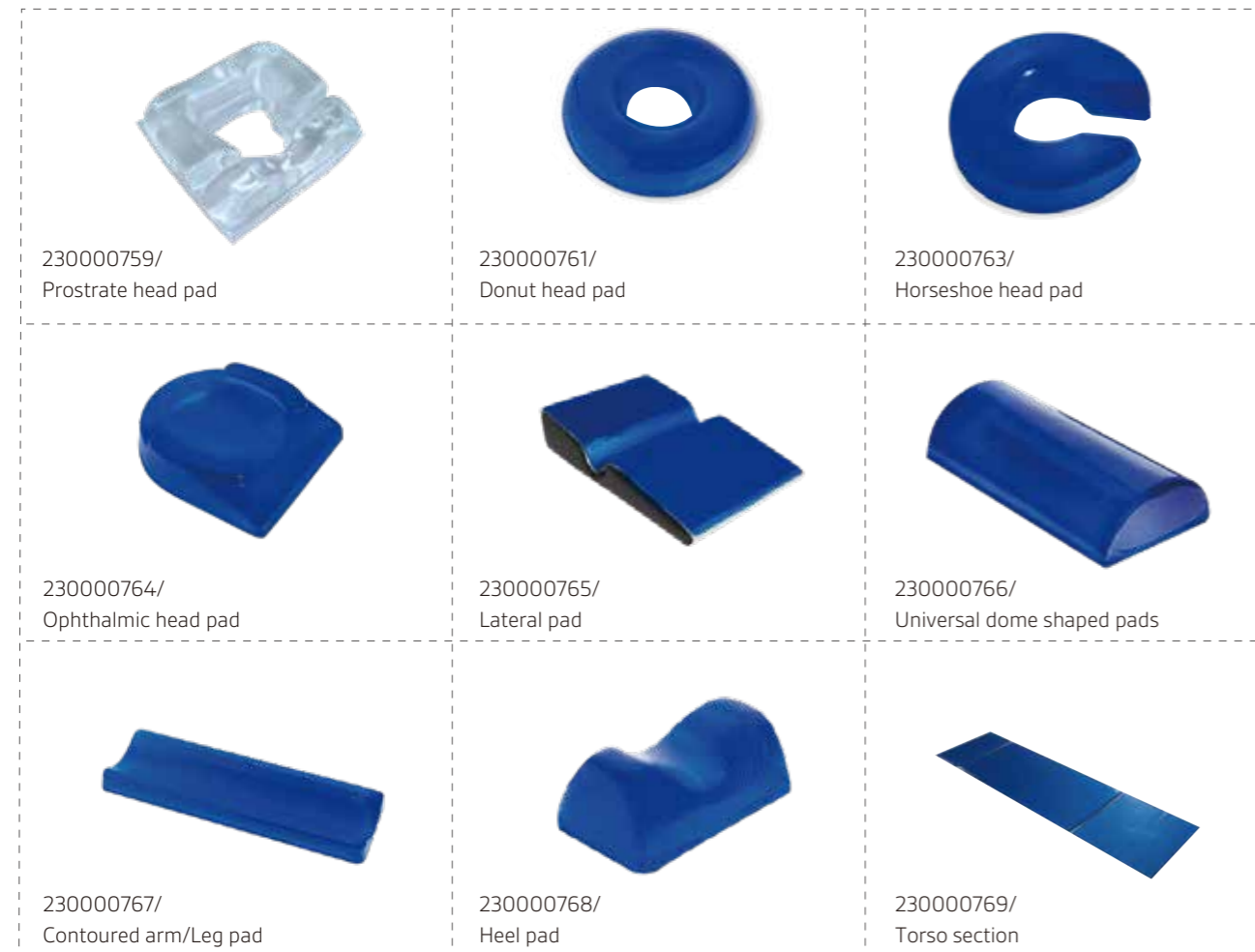
Standard Accessories



Gel Pad

Functions & Features:

The gel pad which made from viscoelastic polymer gel, offers stability and comfort during positioning. It has uniform dispersion of pressure which can avoid bedsores. It is easy to clean and X-ray translucent. It can support surgery with working environment temperature from -10°C to 50°C. It is also biocompatible with human skin and tissues. All these features make the gel pads cost-effective and durable.



Surgery Positions:



Chest/Abdominal Surgery

Recommended accessories:

- 230000760 donut head gel pad ×1
- 230000769 Torso section gel pad ×1
- 121000347 Foot plate 1pair
- 121000348 Notched clamp ×2
- 121000294 Arm rest ×2



E.N.T Surgery

Recommended accessories:

- 230000760 donut head gel pad ×1



Urology/Ob/Gynecology Procedures Surgery

Recommended accessories:

- 230000760 Donut head gel pad ×1
- 230000769 Torso section gel pad ×1
- 121000295 Knee crutch ×2
- 121000357 Drainage bowl ×1
- 121000294 Arm rest ×2



Spinal Surgery

Recommended accessories:

- 230000759 Prostrate head gel pad ×1
- 121000356 Intervertebral pad ×1
- 121000294 Arm rest ×2
- 230000769 Torso section gel pad ×1
- 230000766 Universal dome shaped pad ×1



Shoulder Operation

Recommended accessories:

- 121000294 Arm rest ×2
- 121000350 Head rest ×1
- 121000351 Connection bracket ×1



Neurosurgery

Recommended accessories:

- 121000294 Arm rest ×2
- 121000350 Head rest ×1
- 121000351 Connection bracket ×1
- 230000769 Torso section gel pad ×1
- 230000766 Universal dome shaped pad ×1