



# ECO3

Powerful and Affordable B&W system



**CHISON**  
Value Beyond Imaging

# Advanced Imaging Technologies



## Ergonomics

- Rotatable LED (0~30°): tailor to different viewing angles
- Ultra-compact & Ultra-light
- Easy to carry
- Keyboard: For easy and quick access
- Dedicated cart TR 9000
- Streamlined workflow

## ECHO

- Advanced technologies:
  - i-Image (Intelligent image optimization)
  - THI (Tissue Harmonic Image)
  - SRA (Speckle Reduction Algorithm)
  - Compound imaging
- Full digital beam-former
- Trapezoid
- Automatic PW trace
- Chroma
- Full screen display mode
- AIO (Automatic image optimization)

## Economic

- The latest platform & more advanced chip-set: brings you better image quality and features at less cost in a more compact box
- Support PC printer, reduce investment & day to day paper cost
- 8G memory card
- 500G harddisk (option)
- Vehicular Charging

## ECO-friendly

- Less radiation
- Less power consumption
- Longer usage life: LED
- Longer battery > 2.5 hours

# Support PC Printer



ECO3



Traditional Ultrasound

Connect PC Printer



PC Printer

A4 Paper



Connect Video Printer



Video Printer

Thermal Paper



Can ONLY Use Video Printer

## Benefits

- PC printer is less expensive than video printer
- A4 paper saves more cost than thermal paper for everyday use
- Detail report can be printed (with images, measurement results, patient information)

- More expensive
- Can ONLY print images



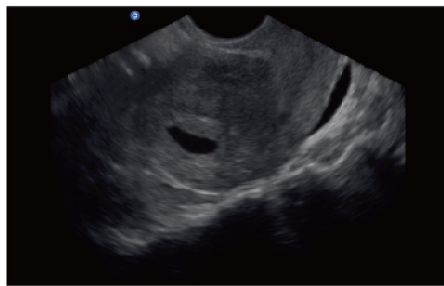
# Excellent PW

resolution and automatic PW trace measurement will greatly improve the diagnosis confidence by delivering both qualitative & quantitative results.

## Great image quality



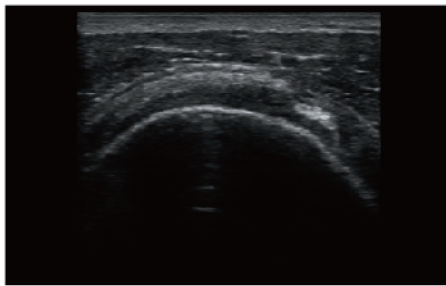
Median Sagittal Section, B Mode



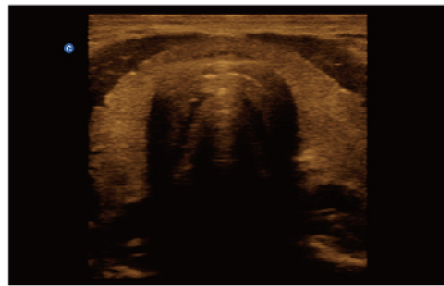
Early Pregnancy, B Mode



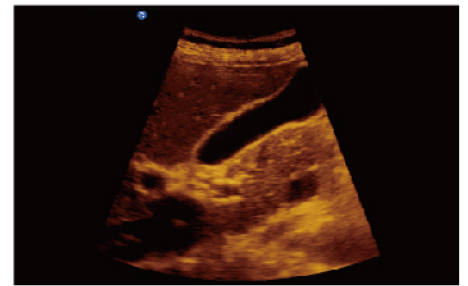
Kidney, B Mode



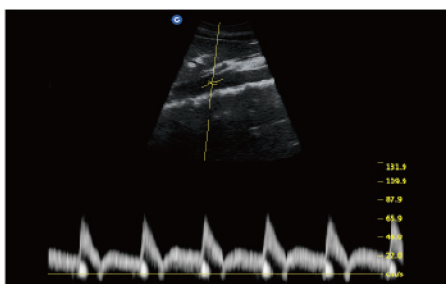
Subscapularis Tendon, B Mode



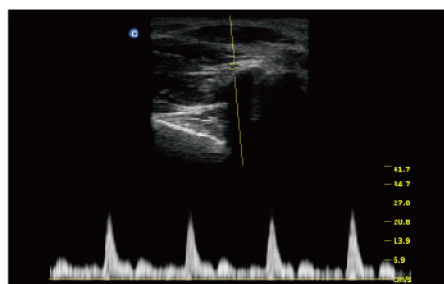
Thyroid, B Mode



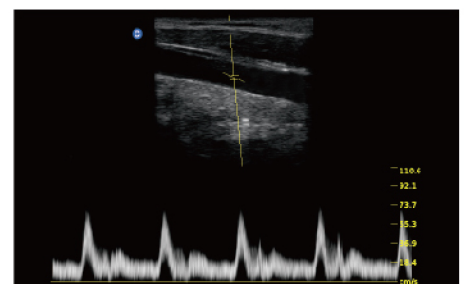
Gallbladder, B Mode



Aorta Artery, PW Mode



Thumb Artery, PW Mode



Carotid, PW Mode

# Specifications

Applications	Abdomen, OB/GYN, Vascular, Small parts(breast, testicles, thyroid), Musculoskeletal Conventional & Superficial, Pediatrics, Basic Cardiac
Imaging technologies	i-Image, Compound imaging, SRA, THI
Display Modes	B, B/B, 4B, M, B/M, PW
Gray Scale	256 Levels
Scanning Depth	240mm Max(depend on the probe types)
Probe Frequency	2.5 MHz - 11.0 MHz (Depend on the probe)
Cine Loop	256 frames
Zoom	4 steps
Software Packages	Dedicated measurement package: General, OB/GYN, URO, Cardiac, Vascular, Small parts
Archives Management	Patient information management, images record, exam report
Power Supply	AC 100V-240V, 50Hz-60Hz
Standard Configuration	1 probe connector, 3 USB ports, VGA port, Video port, LAN port, Full Screen Display Mode, i-Image, Chroma, SRA, Compound imaging, THI, 8G memory card, PW Mode
Option	2 probe connectors, DICOM, Water-proof keyboard cover, Carrying Case (BG-100), Cart TR 9000, Support PC Printer, Video Printer, Built-in Battery



2.5MHz-5.0MHz Convex  
C3-A



5.3MHz-10.0MHz Linear  
L7M-A



5.3MHz-11.0MHz Linear  
L7S-A



2.5MHz-5.0MHz Micro-Convex  
MC3-A



5.0MHz-10.0MHz Trans-Rectal  
R7-A



4.5MHz-8.0MHz Transvaginal  
V6-A



4.5MHz-8.0MHz Micro-Convex  
MC6-A

CHISON Medical Technologies Co., Ltd.

**Sales & Service Contact Address:**

No.9, Xinhuihuan Road, Xinwu District, Wuxi, Jiangsu, China 214028

T: 0086-510-85310593 / 85310937

F: 0086-510-85310726

E: export@chison.com.cn

ECO3-20180525